

# WASPJET<sup>®</sup> PRO



## Get it before it gets you!



- Power jet to spray wasps from up to 6m!
- Double active loading for "instant" knockdown
- Complete control - kills wasps and their larvae
- Smart option for electrical areas
  - Carbon dioxide propellant
  - Low conductivity formulation



### Control wasps with confidence

 **SUMITOMO CHEMICAL**  
Creative Pest Solutions



## Product information

### Product Summary:

WaspJet Pro® Aerosol allows you to tackle wasp nests with confidence.

The long distance / high output nozzle ensures that nests can be treated from a safe distance and quickly soak the nest.

The combination of double strength actives and rapid penetration solvents, ensures the wasps are "paralysed" on contact before dropping to the ground.



### PRODUCT PROFILE

**Actives:**

2.5g/kg Cyphenothrin (Group 3A)  
2.5g/kg d-Tetramethrin (Group 3A)

**Formulation:** Oil based aerosol

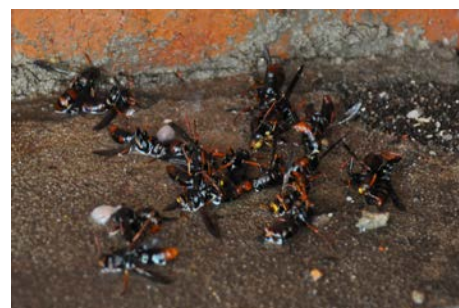
**Pack sizes:** 400g

**Poison scheduling:** S5 - Caution

**Always follow safety directions as specified on the product label.**


## PERFORMANCE

Medium sized paper wasp nest → Treated with a 2 second spray → Immobilised instantly



Active nest with adults and larvae → Coats and penetrates the nest → Adults and larvae dead in seconds

### Product Label Summary

SITUATION	PEST	RATE	CRITICAL COMMENTS
FOR CONTROL OF WASPS IN DOMESTIC, COMMERCIAL AND INDUSTRIAL AREAS	<b>Wasps</b> , including but not limited to; Paper wasps, Mud dauber wasps and European wasps	Spray with a sweeping motion until nest is saturated.	Best results are achieved if wasps are sprayed directly. For best results, spray in early morning or late evening when most wasps are back in the nest and less active.
WaspJet Pro formulation has a breakdown voltage of 58.8kV (IEC60156) - which is the voltage required for the formulation to conduct electricity. With consumer electrical supply at 240-415V and even industrial supply between 11 and 33kV, WaspJet Pro gives you that extra confidence should accidental contact with electrical systems occur.			Hold can upright and target spray towards the nest with the wind coming from behind you. Spray should reach 3-6m.
			Wear protective clothing when treating nests and stand at a safe distance and not directly underneath.

**ALWAYS READ AND FOLLOW THE LABEL ON THE REGISTERED PRODUCT BEFORE USE**

 SUMITOMO CHEMICAL

Level 5, 51 Rawson Street,  
Epping, NSW 2121

[www.sumitomo-chem.com.au](http://www.sumitomo-chem.com.au)

Tel: (02) 8752 9000

Fax: (02) 8752 9099

WaspJet is a registered trademark of Sumitomo Chemical Australia Pty Ltd



Distributor information